

FAQS

CAN I LEAVE MY BOAT OVERNIGHT WITHOUT BEING A TENANT?

The Camana Bay Harbour is open to the public. Visitors can dock at the harbour overnight for a fee.

HOW DO I KNOW IF MY BOAT WILL FIT?

The canals are designed to accommodate safe entry to the harbour for vessels with up to 5.5-foot draft.

I HAVE VALUABLES ON BOARD. IS MY PROPERTY SAFE?

Although Camana Bay has 24-hour security and security gate, all items on your vessel are left at your own risk.

I AM HAVING ISSUES WITH MY SLIP. WHAT SHOULD I DO?

We have a dedicated team that oversees the harbour. Whenever you need assistance, contact harbour@camanabay.com.

The team is also available via VHF marine radio under call-sign: Camana Bay. For urgent matters, please call the security desk on **+1.345.640.4357 (HELP)**. For emergencies call **911**.

WHERE IS THE HARBOUR ENTRANCE LOCATED?

The entrance to the harbour is located at coordinates (19°19.489N/81°21.787W).

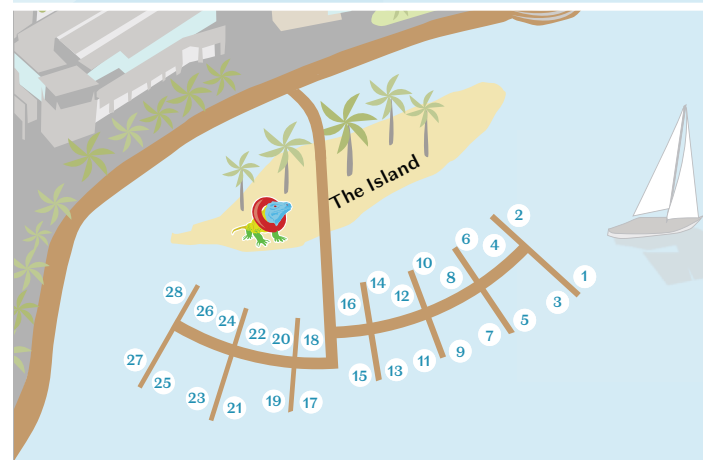
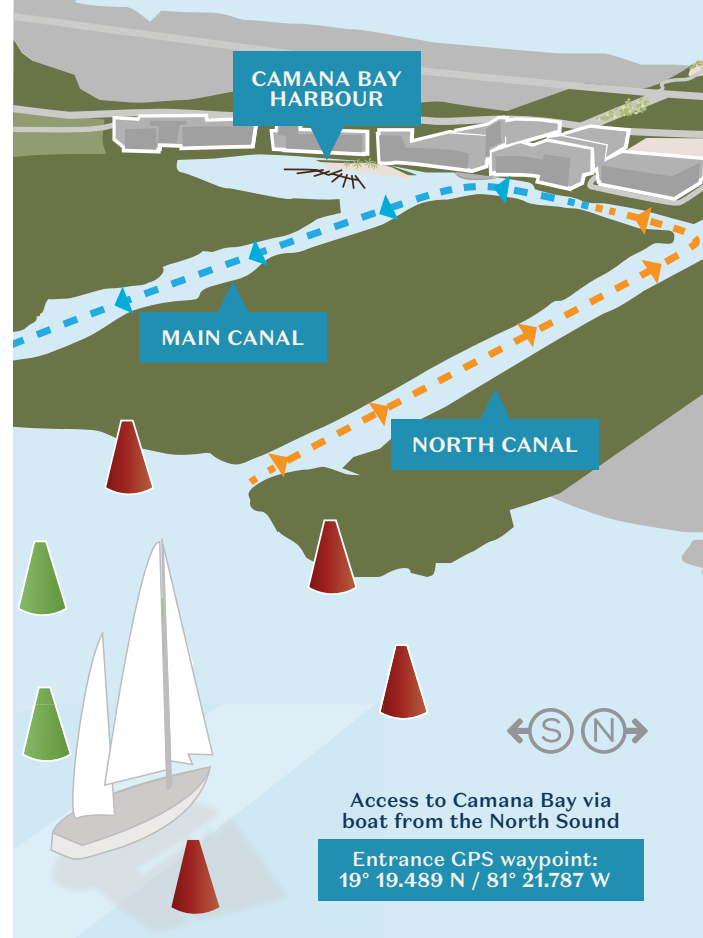
The one-way system is clearly marked by signs. Enter the harbour through the North Canal and exit the harbour using the South Canal.

ARE SLIPS PROVIDED FOR PRIVATE VESSELS?

The Camana Bay Harbour accommodates private and commercial vessels.

I WANT A HARBOUR SLIP. HOW DO I START THE PROCESS?

Send an email to the harbour team at harbour@camanabay.com. The team will guide you through the easy steps for leasing a harbour slip.



+1.345.640.4000 or
harbour@camanabay.com
CAMANABAY.COM

Dock at the Bay



CAMANA BAY

**If you enjoy
spending
time out on
the water,
look no
further than
Camana Bay.**

SLIP RATES

- LONG-TERM/MONTHLY RENTAL
Non-serviced slip - CI\$10
Serviced slip (partial*) - CI\$11
Serviced slip (full**) - CI\$13.50
- Rates calculated per linear foot
- Flexible leasing terms
- Partial (private vessel):
water CI\$20.50 or electricity
CI\$32.80 per month
- Partial (commercial vessel):
water CI\$28.70 or electricity
CI\$53.30 per month
- Full (private vessel): CI\$53.30 per month
- Full (commercial vessel): CI\$82 per month
- Nightly rate: CI\$25
- Security deposit: one month's rental rate
- 5% discount: offered with six months' advanced payment
- 10% discount: Camana Bay residents

KEY HARBOUR REGULATIONS

- Children must be supervised at all times
- Pets must be under leash control at all times and pet waste must be instantly collected and properly disposed of
- All vessels are subject to the laws, regulations and policies governing the use of marine crafts
- No swimming, fishing, loud music or clothing hanging off the sides of vessels while docked at slips
- No fish cleaning allowed on slips/boardwalk
- No major engine repairs allowed on slips/ boardwalk
- No jet skis or wakeboarding permitted
- Trash and garbage bags must be disposed of properly and are not permitted to be left on the dock
- Vessels and contents are docked at owner's risk
- The discharge of toilets, bilges, petroleum or other hazardous materials is strictly prohibited
- The Camana Bay canals, harbour, docks, common walkways and boat slips are the private property of Camana Bay
- Access and use is always at the discretion of Camana Bay Property Management

